

DOUBLE FLAT FILTER HOUSING UNIT

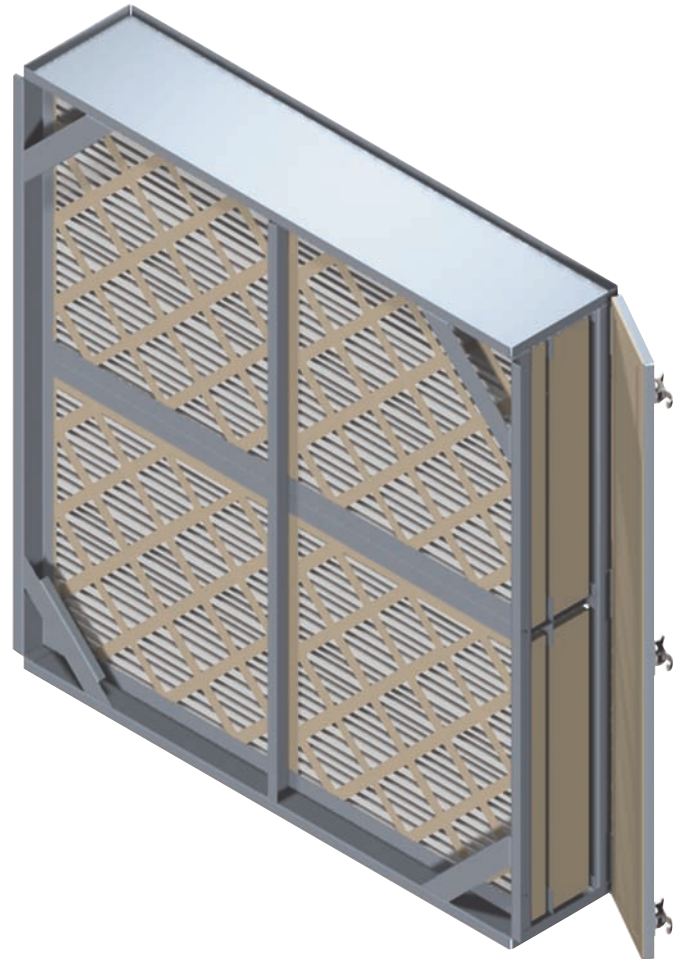
MODEL: DFFU

2 STAGES OF FILTRATION • PRE-FILTER • FINAL FILTER • SIDE ACCESS



OVERVIEW:

Designed as a 2 stage general purpose unit, the DFFU improves upon the FFHU series of housings by adding a 4" (102) final filter. Including a 2" (51), or optional 4" (102), pre-filter the DFFU complements existing equipment and when combined with other housing types provides exceptional versatility. Expressed in module sizes, units range from .5 to 6 wide to .5 to 4 high. There are two depths, 11" (279) and optionally 13" (330) to accommodate combinations of pre-filters and final filters. Integrated 1" (25) mounting flanges, on both the inlet and discharge, allow for quick installation onto air handlers, ductwork or other filter housings. Every unit includes a standard right mounted access door. Housings over 2 modules in width will include a second access door for easier filter access. Each door is fully gasketed around the perimeter to provide an airtight seal when closed. Additional gasketing is applied to the interior of the door to seal against filter sides. Reinforcing gussets are included as standard to increase housing strength and stability. Center legs on units 2 modules or larger will be added to the pre-filter, or inlet side, and will typically be placed on 24" (610) centers. Options on the DFFU Series include custom sizing, custom flanges, specialty materials, insulated housings, weatherproof construction, finishes and more.



STANDARD CONSTRUCTION:

- SIZE:** Available in ½ width and height module sizes, up to size 6 wide and size 4 high. Two depths, 11" (279) and 13" (330) will accommodate 2" (51) or 4" (102) pre-filters with 4" (102) deep final filters.
- FRAME:** 16 ga. (1.63) galvanized steel frame with 4 sided integrated 1" (25) mounting flanges, turned outward, located on inlet and discharge.
- FILTER: (TRACK)** 20 ga. (1.00) galvanized steel formed filter track with rubber fin seal.

- FINISH:** Mill finish interior and exterior.
- DOOR: (ACCESS)** Hinged side access door (right hand as standard) with positive pressure draw latches. Doors sealed with closed cell neoprene gasketing around perimeter. Urethane foam gasket applied to inside of door to seal filter against door.
- BRACING:** Corner gussets for added rigidity. For units wider than 2 modules, formed center legs are added for strength and rigidity. Center legs will typically be on 24" (610) centers.

DIMENSION: INCHES (mm) P. 1 of 3.

SCHEDULE TYPE
PROJECT
ENGINEER
CONTRACTOR

Submittal

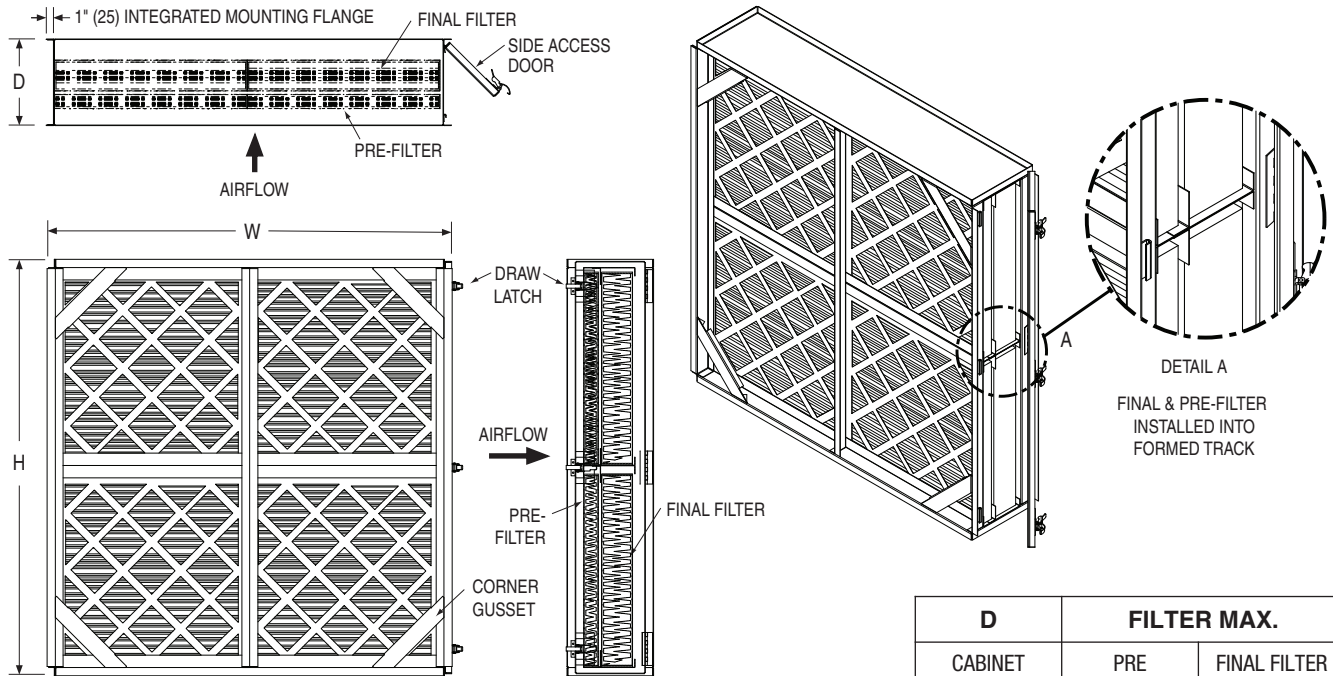
DFFU

SUPERSEDES: 10 - 15 - 10 REV.: 1 - 20 - 11

DOUBLE FLAT FILTER HOUSING UNIT

MODEL: DFFU

2 STAGES OF FILTRATION • PRE-FILTER • FINAL FILTER • SIDE ACCESS



D CABINET	FILTER MAX.	
	PRE	FINAL FILTER
11 (279)	2 (51)	4 (102)
13 (330)	4 (102)	

SIZING* W/ MAX AIRFLOW CAPACITY RATED @ 500 FPM

MODULE	H	0.5	1.0	1.5	2.0	2.5	3.0	3.5	4.0
W	HOUSING	14 (356)	26 (660)	37 3/4 (959)	49 3/4 (1264)	61 5/8 (1565)	73 5/8 (1870)	85 1/2 (2172)	97 1/2 (2476)
0.5	13 5/8 (346)	—	1000 (472)	1500 (708)	2000 (944)	2500 (1180)	3000 (1416)	3500 (1652)	4000 (1888)
1.0	25 5/8 (651)	1000 (472)	2000 (944)	3000 (1416)	4000 (1888)	5000 (2360)	6000 (2831)	7000 (3303)	8000 (3775)
1.5	37 1/4 (946)	1500 (708)	3000 (1416)	4500 (2124)	6000 (2831)	7500 (3539)	9000 (4247)	10500 (4955)	12000 (5663)
2.0	49 1/4 (1251)	2000 (944)	4000 (1888)	6000 (2831)	8000 (3775)	10000 (4719)	12000 (5663)	14000 (6607)	16000 (7550)
2.5	60 7/8 (1546)	2500 (1180)	5000 (2360)	7500 (3539)	10000 (4719)	12500 (5899)	15000 (7079)	17500 (8258)	20000 (9438)
3.0	72 7/8 (1852)	3000 (1416)	6000 (2831)	9000 (4247)	12000 (5663)	15000 (7079)	18000 (8494)	21000 (9910)	24000 (11326)
3.5	84 5/8 (2149)	3500 (1652)	7000 (3303)	10500 (4955)	14000 (6607)	17500 (8258)	21000 (9910)	24500 (11562)	28000 (13213)
4.0	96 1/2 (2451)	4000 (1888)	8000 (3775)	12000 (5663)	16000 (7550)	20000 (9438)	24000 (11326)	28000 (13213)	32000 (15101)
4.5	108 1/8 (2746)	4500 (2124)	9000 (4247)	13500 (6371)	18000 (8494)	22500 (10618)	27000 (12741)	31500 (14865)	36000 (16988)
5.0	120 1/8 (3051)	5000 (2360)	10000 (4719)	15000 (7079)	20000 (9438)	25000 (11798)	30000 (14157)	35000 (16517)	40000 (18876)
5.5	131 3/4 (3346)	5500 (2595)	11000 (5191)	16500 (7786)	22000 (10382)	27500 (12977)	33000 (15573)	38500 (18168)	44000 (20764)
6.0	143 3/4 (3651)	6000 (2831)	12000 (5663)	18000 (8494)	24000 (11326)	30000 (14157)	36000 (16988)	42000 (19820)	48000 (22651)

*Housings are ordered in Module designations. See notes for details.

AIRFLOW: **CFM (l/s)**

DIMENSION: INCHES (mm) P. 2 of 3.

SCHEDULE TYPE
PROJECT
ENGINEER
CONTRACTOR

Submittal

DFFU

SUPERSEDES: 10 - 15 - 10 REV.: 1 - 20 - 11

DOUBLE FLAT FILTER HOUSING UNIT

MODEL: DFFU

2 STAGES OF FILTRATION • PRE-FILTER • FINAL FILTER • SIDE ACCESS



OPTIONS:

- 4" (102) pre-filter track
- 304SS frame and track construction, up to 12 ga. (2.67).
- 316SS frame and track construction, up to 12 ga. (2.67).
- .080" (2.03) Type 3003 aluminum alloy housing construction.
- Weatherproof construction to include pitched roof and rain guards over side access door(s).
- Multiple access doors, or non-hinged door applications. Contact factory for details.
- Air dried epoxy painted surfaces, gray as standard. Other Color: _____ .
- Insulated housing. Standard insulation is 1" (25) thick, 4 lb./cu. ft. (64 kg/m³) density rigid fiberglass with a fire resistant reinforced aluminum foil-scrim-kraft (FSK) facing.
- Double wall insulated door. Includes 1" (25) 4 lb./cu. ft. (64 kg/m³) density rigid fiberglass insulation installed between door panels.
- Available positive or negative high pressure construction. Includes additional bracing for rigidity. Contact factory for information.
- High temperature construction. Contact factory for information.
- Custom housing sizes. Please indicate custom dimensions under **ORDERING: CUSTOM MODULES**.
- Custom mounting flange sizes (flanges turned outward or inward). Indicate custom flange sizes under **ORDERING: CUSTOM MODULES**.
 - 1 side (Inlet or Discharge)
 - 2 sides (Inlet and Discharge)
- Other: _____ .

ORDERING:

STANDARD MODULES

Step 1: Select module W

Step 2: Select module H

Step 3: Select housing Depth based on pre-filter

Standard Housing Sizes:

W _____ x H _____ x D _____
Module Module

CUSTOM MODULES

Step 1: Enter overall outside filter housing width including mounting flanges.

Step 2: Enter overall outside filter housing height including mounting flanges.

Step 3: Enter overall filter housing depth.

Custom Housing Sizes:

W _____ x H _____ x D _____

Step 4: Enter custom flange sizes, if needed. These will be subtracted from overall dimensions listed above to find inside cabinet dimensions.

Inlet:

Top: _____ Bottom: _____ Left: _____ Right: _____

Discharge:

Top: _____ Bottom: _____ Left: _____ Right: _____

NOTES:

- Module Width x Height sizing of units is based on 24" x 24" (610 x 610) pre-filter face size. For example, a module 2W x 2H is constructed of four 24" x 24" filters that are arranged 2 wide by 2 high. ½ increments refer to filters 12" (305) in size. Depth of the housing is determined by pre-filter depth.
- Capacities are based on a filter airflow velocity of 500 fpm (2.54 m/s).
- When numbers of filter modules exceed 2 wide, side access doors are included on both sides as standard.
- Selecting the weatherproofing option changes the overall dimensions. Width is reduced by 2" (51) and 1" (25) is added to the height. All mounting flanges are turned inward to prevent water penetration.
- If a bottom access door is used, filter clips are added to retain filters, preventing the filter(s) from dropping when door is opened.
- All housing mounting hardware, clips, angles, etc. by others.
- All orders require approval of Engineered Submittal Drawings before manufacture.

SCHEDULE TYPE

PROJECT

ENGINEER

CONTRACTOR

Submittal

DFFU

SUPERSEDES: 10 - 15 - 10

REV.: 1 - 20 - 11